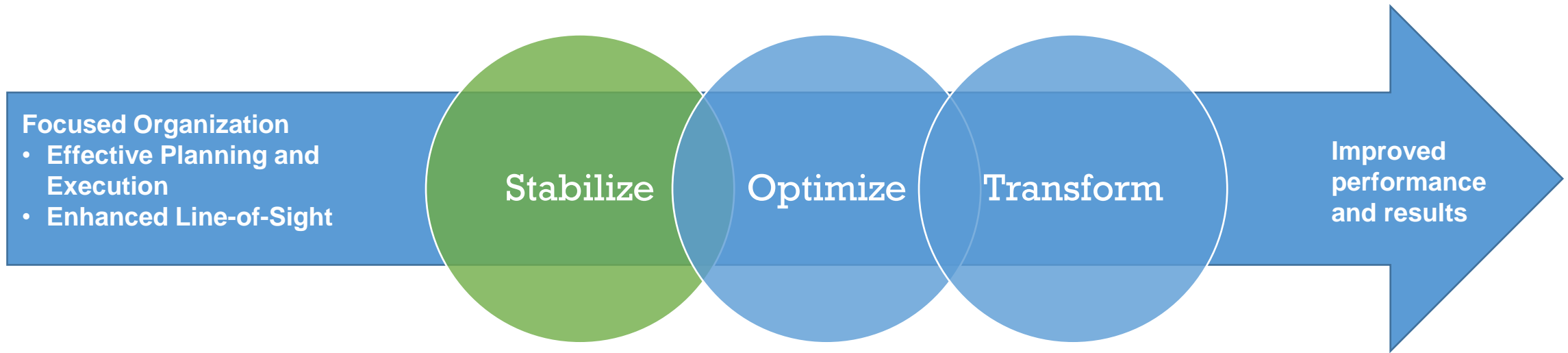
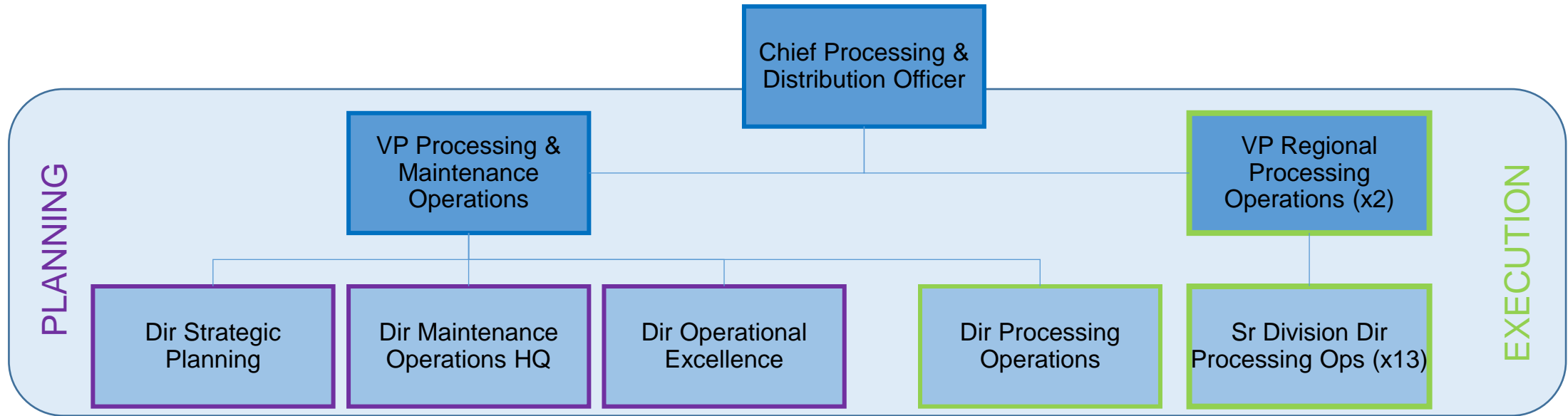


MTAC: Peak Season Update

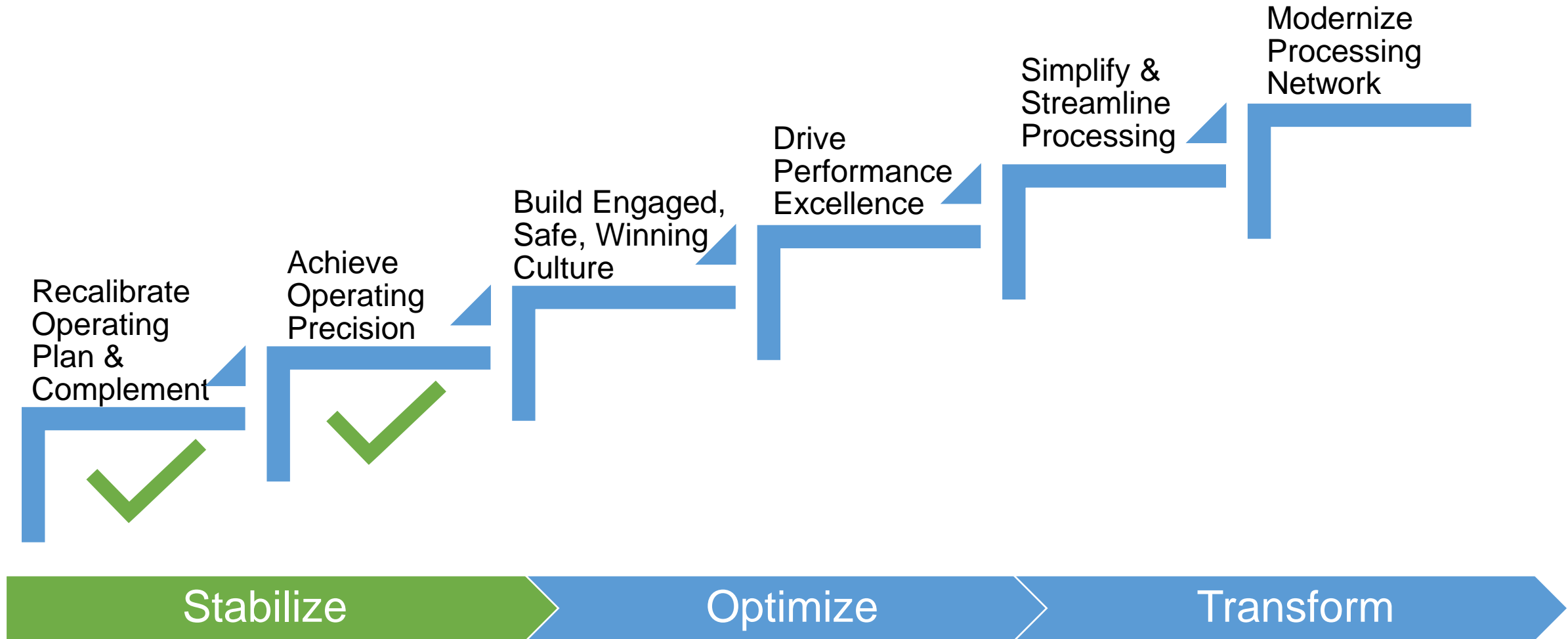
Isaac Cronkhite, Chief Processing and
Distribution Officer & EVP

October 25, 2022

Chief Processing and Distribution Officer Organization



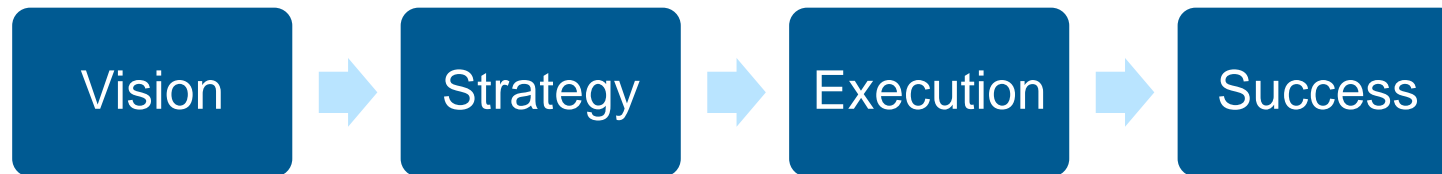
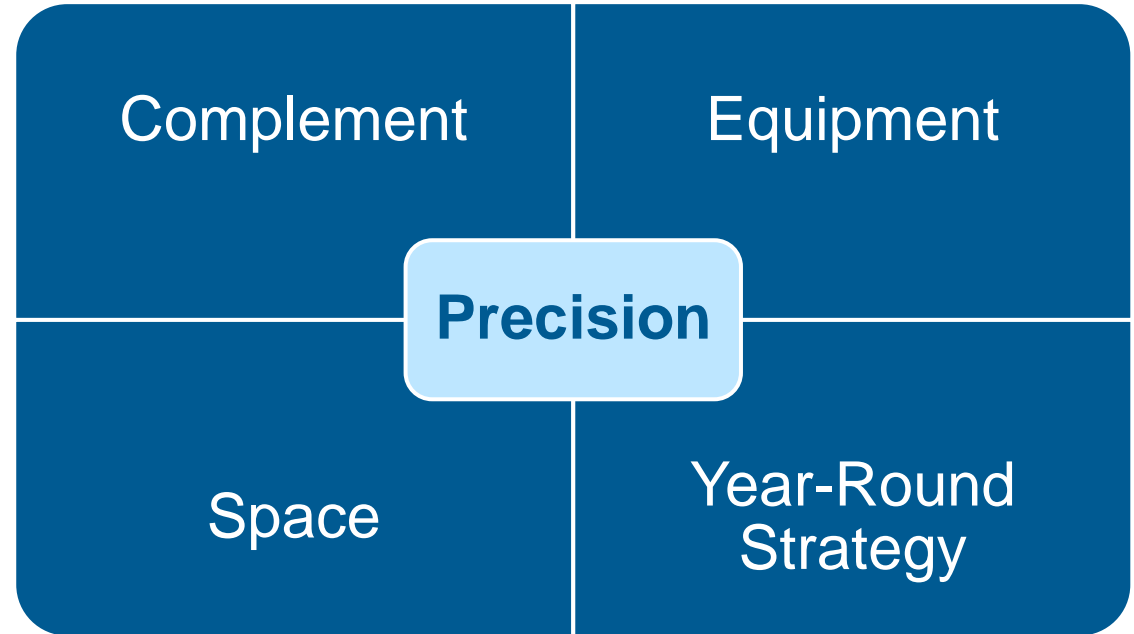
Processing, Distribution & Maintenance Operations: Path to Service Excellence and Financial Sustainability



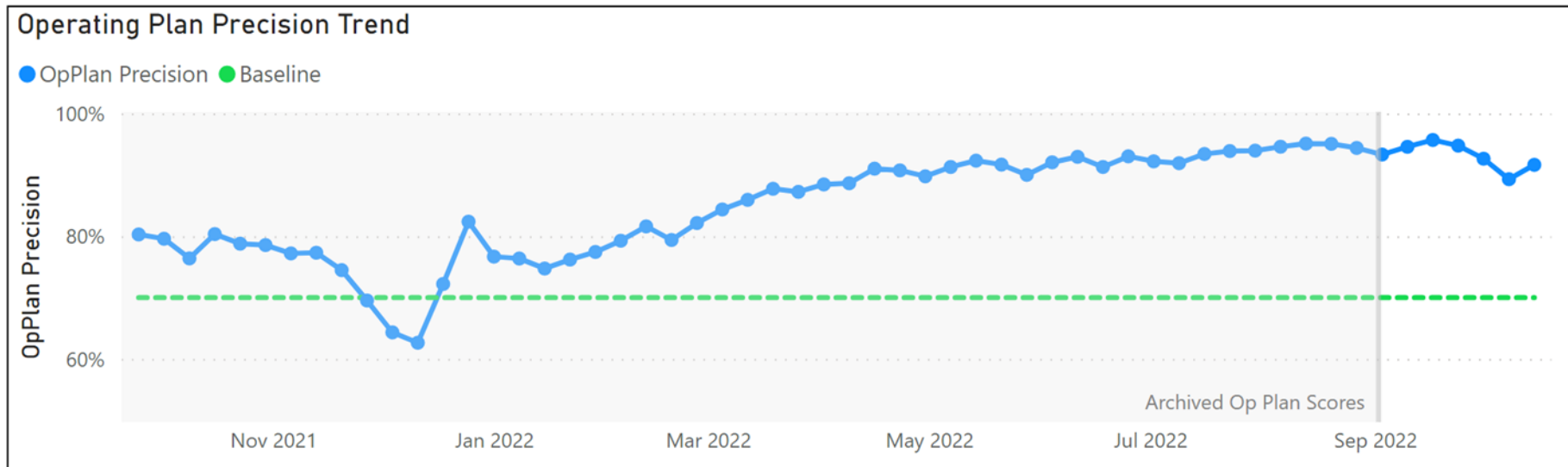
2022 Peak – We are ready!

Continuing a successful year-round strategy to deliver for our customers

- ✓ **More precise**
- ✓ **More efficient**
- ✓ **More cost-effective**



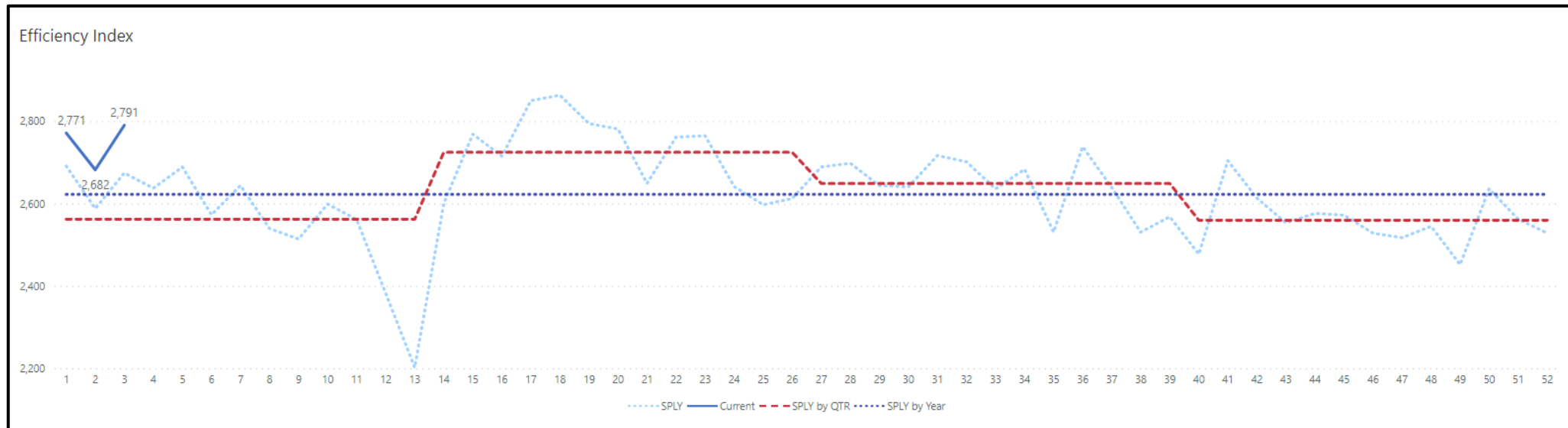
Operational Precision



- Continued upward trend for Operational Precision
- Achieve our processing plan at each facility every day; processing all expected volume by the expected clearance time.
- Precision in processing enables trucks to leave on time and mail to get to destination timely
- Effective planning and daily execution; aligning staffing with workload, achieving throughput and clearance times by ensuring quality maintenance operations and standardized operator performance.

Source: WebEOR

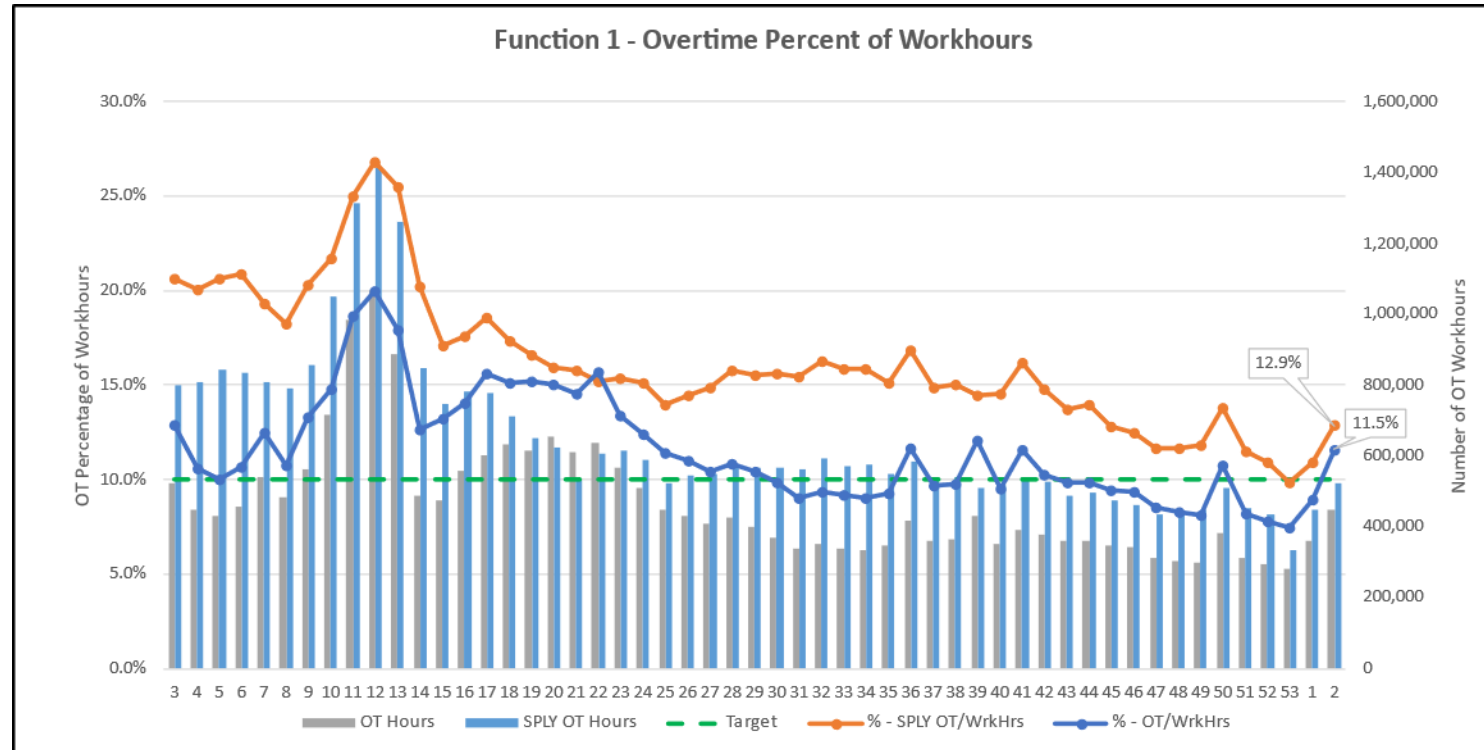
Operational Efficiency



- FY23 above SPLY for Operational Efficiency
- Matching workhours to workload
- Efficient operations reduces cost
- Efficient planning and daily execution

Source: WebEOR

Cost Effective



- Continued downward trend of overtime usage
- Reducing the cost per handling for each mail piece and package

Source: WebEOR

2022 Peak – We are ready!

Continuing a successful year-round strategy to deliver for our customers

- ✓ **More precise**
- ✓ **More efficient**
- ✓ **More cost-effective**

Thank you
for your
communication
and
engagement

**Looking
forward**
to another
successful year
and peak
season